



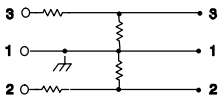
## Model A15LA User Guide

---

### MODEL A15LA LINE INPUT ADAPTER

The A15LA is a 50 dB attenuator. Use the A15LA to connect a line-level or aux-level signal from devices such as mixers, tape recorders, and CD players.

The A15LA input can be connected to either a balanced output or an unbalanced output. If the output is unbalanced, connect the audio “hot” lead to pin 2 of the A15LA and connect the audio ground lead to pin 1 of the A15LA. Make no connection to pin 3 of the A15LA. Refer to Figure 1.



A15LA WIRING DIAGRAM  
**FIGURE 1**



## **SPECIFICATIONS**

### **Frequency Response**

20 to 20,000 Hz  $\pm 0.5$  dB

### **Impedance**

Input: 100 k $\Omega$

Output: 300  $\Omega$

### **Attenuation**

50 dB

### **Maximum Input Signal Level**

40 dBV

### **Connectors**

Input: 3-socket female XLR

Output: 3-pin male XLR

### **Case**

Full magnetic shield, steel with gray enamel finish

### **Dimensions**

19 mm ( $3/4$  in.) diameter; 114 mm ( $4\ 1/2$  in.) long

### **Weight**

80 g (2.8 oz.)







## **LIMITED ONE-YEAR WARRANTY**

Shure Incorporated ("Shure") hereby warrants that this product will be free from in normal use of any defects in materials and workmanship for a period of one year from the date of purchase for all cartridge and housing assembly parts and for a period of one year from the date of purchase for all transmitter parts. At its option Shure will repair or replace the defective product and promptly return it to you, or refund the purchase price. You should retain proof of purchase to validate the purchase date and return it with any warranty claim.

If you believe this product is defective within the warranty period, carefully repack the unit, insure it and return it postage pre-paid to:

**Shure Incorporated  
Attention: Service Department  
5800 W. Touhy Avenue  
Niles, IL 60714-4608 U.S.A.**

Outside of the United States, return the product to your dealer or Authorized Service Center.





This warranty does not apply in cases of abuse or misuse of the product, use contrary to Shure's instruction, ordinary wear and tear, an act of God or unauthorized repair. All implied WARRANTIES OF MERCHANTABILITY or FITNESS FOR A PARTICULAR PURPOSE are hereby disclaimed and Shure hereby disclaims liability for incidental, special, or consequential damages resulting from the use or unavailability of this product.

Some states do not allow limitations on how long an implied warranty lasts, or the exclusion or limitation of incidental or consequential damages, so the above limitation may not apply to you. This warranty gives you specific legal rights, and you may have other rights which vary from state to state.

**THIS WARRANTY SUPERSEDES ALL OTHER WARRANTIES ASSOCIATED OR INCLUDED WITH THIS PRODUCT.**



***SHURE Incorporated Web Address: <http://www.shure.com>  
5800 W. Touhy Avenue, Niles, IL 60714-4608, U.S.A.  
Phone: 800-257-4873 Fax: 847-866-2279  
In Europe, Phone: 49-7131-72140 Fax: 49-7131-721414  
In Asia, Phone: 852-2893-4290 Fax: 852-2893-4055  
Elsewhere, Phone: 847-866-2200 Fax: 847-866-2585***

