



4+1
CHANNELS

10
INPUTS

3
BAND
E-KILL-IZER

X
CROSS FADER

FILTERS
VOLTAGE CONTROLLED

FX
ASSIGNABLE

CUE

LIMITER

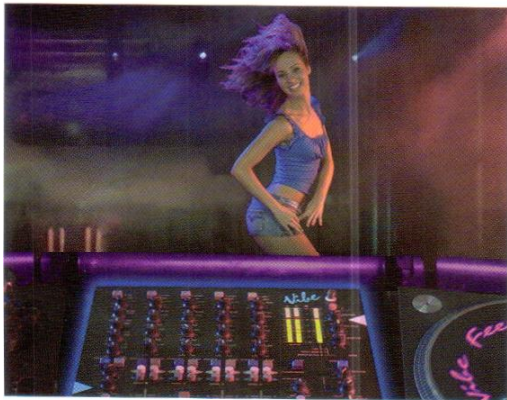
M
MASTER

∞
CHAIN IN/OUT

DATEQ
VIBE

DATEQ VIBE

Dateq's super disco mixer: a challengingly creative dancing machine



The Netherlands is a nation of DJs. The present generation of top DJs is living proof of that. Thanks to the input from many of these DJs, Dateq has always been able to develop attractive disco mixers such as the Vibe.

An advanced disco mixer that offers professional DJs challengingly creative opportunities. Accept the challenge and crush the competition.

4+1
CHANNELS

10
INPUTS

3
BAND
E-KILL-IZER

X
CROSS FADER

FILTERS
VOLTAGE CONTROLLED

The Vibe has four 60-mm VCA controlled fader channels and a separate microphone and line channel. Ten inputs (three phono inputs, six line inputs and a separate microphone input) provide great flexibility and make source replugging unnecessary.

Expert hands will find it easy to make any adjustment you like using the very effective threefold tone control. Each band can be reduced to -32 dB or 'safely' amplified to 8 dB. A fourfold tone control adapted for vocal use with a control range of +/- 15 dB is used for the first microphone/line channel.

The 50-mm crossfader that can be allocated to each of the four channels is VCA controlled to prevent breakdowns. The fader curve has four adjustable presets, which makes it suitable for styles varying from house to ultrarapid scratch. The microphone channel also has a RAP button to directly adjust the channel to a preset value.

Thanks to two stereo Voltage Controlled Filters, each DJ has access to an unprecedented high level of creativity. These 'classic' filters are also found in first-generation synthesizers. The five filters, including an HPF (high pass), BPF (band pass) and LPF (low pass) filter, are the basis of an unparalleled range of sound variations. In addition, the filters can be combined to create extreme effects. The resonance control 'Q' is used to adjust the sharpness of the filter, which ranges from subtle to very aggressive.

FX
ASSIGNABLE

The digital router creates great flexibility in that it provides connectivity for a wide range of external effects equipment. It is possible to connect an effects processor to individual channels or to send the master signal through the effects processor.

CUE

Obviously, each channel has cue facilities and the Dateq 'split' system, which means that the cue signal and the master channel can be heard simultaneously through the headphones. A separate VU meter gives an exact overview of the cue level indicating both the cue signal and the effect send & return signal. This makes overload distortion a thing of the past.

LIMITER

A software-controlled limiter on the output ensures flawless output control and also prevents overload distortion.

M
MASTER

The Vibe by no means lacks outputs. The master output is balanced and has XLR connectors. The Vibe also has an unbalanced cinch output, a booth monitor and a record-out as well as two 6.3-mm jack headphones connections.

α
CHAIN IN/OUT

If the Vibe does not have enough channels, an additional (recording) mixing desk can be plugged in using the chain in/out connections. There is no need to disconnect other channels, guaranteeing continued optimum use of the Vibe.

Technical specifications ¹



INPUTS
Mic, XLR-3F Electronically balanced
Impedance 600ohm
Level -54dBu -28dBu @ 2.5kHz
Noise <-108dB
Headroom +18dB
Phono inputs (channel 2, 3 and 4) Cinch, RIAA inputs
Impedance 47kOhm
Signal level -42dBu/ 5mV
Channel separation > 60dB @ 1kHz
Noise <-80dBu
Line 1/ line 2 Cinch, unbalanced
Signal level 0dBu
Impedance 22kOhm
Channel separation > 60dB @ 1kHz
Noise -80dBu (IHF-A)

EQUALIZER
Microphone channel
HIGH +/-15dB @ 10kHz
MID +/-15dB @ 2.5kHz
LOW +/-15dB @ 350Hz
SUB +/-15dB @ 60Hz
Other channels
HIGH -32/ +8dB @ 12kHz
MID -32/ +8dB @ 1kHz
LOW -32/ +8dB @ 60Hz

SPECIAL INPUTS

Chain in 6.3mm stereo jack
Effect return Cinch, unbalanced

SPECIAL OUTPUTS

Chain out 6.3mm stereo jack
Effect send Cinch, unbalanced

FREQUENCY RESPON

Microphone to master 80Hz - 20kHz @ -1dB
Line to master 10Hz - 20kHz @ -1dB

OUTPUTS

Master XLR-3M, balanced, +6dBu/ 600ohm
Master Cinch, unbalanced, 0dBu/ 600ohm
Monitor Cinch, unbalanced, 0dBu/ 600ohm
Record Cinch, unbalanced, 0dBu/ 600ohm
Headphones (2x) 6.3mm stereo jack, 0.3W at 4-32ohm

COMMON

Power supply voltage 100 - 250Vac/ 50-60Hz
Power consumption 25W

SIZE

Front 320 x 354 mm (B x H)/ 8HE
Depth 92 mm
Weight 4.5kg

1) Reference level 0 dB = 0.775 V

DATEQ Audio Technologies reserves the right to amend specifications without notice in line with technological developments. © 2006 DATEQ Audio Technologies.

DATEQ
audio technologies

Dateq Audio Technologies B.V.
De Paal 37,
NL-1351 JG Almere. Holland
Tel +31(0)36 54 72 222
Fax +31(0)36 53 17 776
E-mail info@dateq.nl
Internet www.dateq.nl